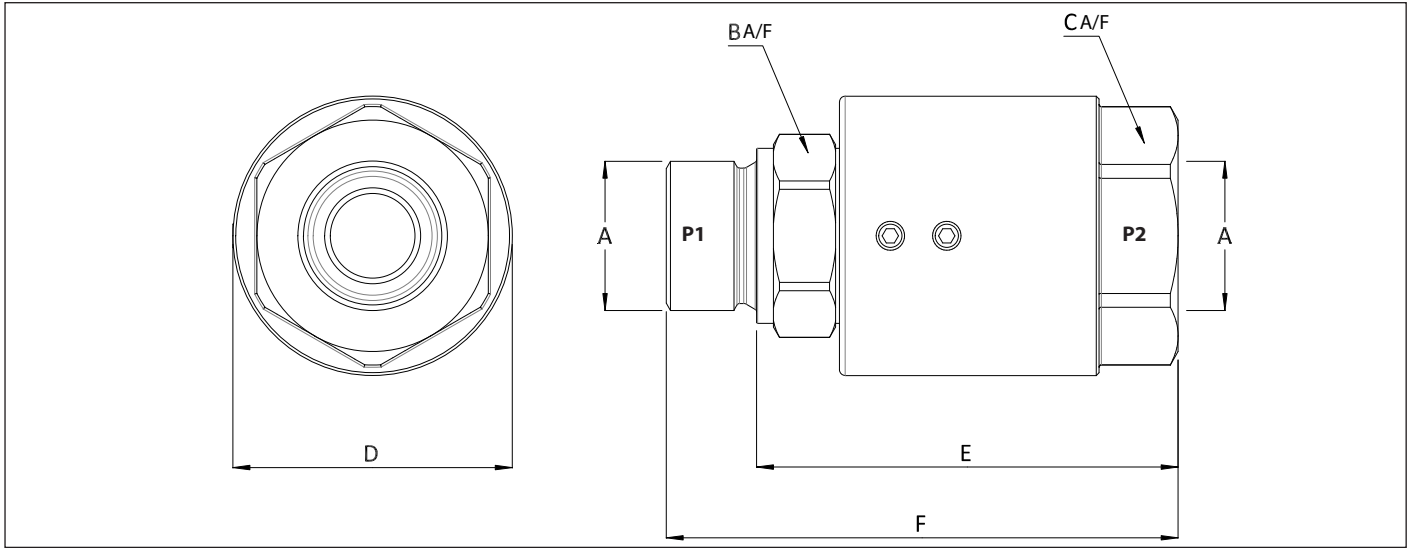


DRAWING



DIMENSIONS

Size	Thread Size (A)	B	C	ØD	E	F	Maximum Working Pressure	Maximum Flow Rate	Maximum Rotational Speed*
		Dimensions in mm					Bar		
		Dimensions in Inches					Psi	L/Min	RPM
GGIL-06	1/4"	19	30	34	52	63	400	25	500
		0.7	1.2	1.3	2.0	2.5	5800		
GGIL-10	3/8"	24	32	37.6	54.8	66.5	400	45	400
		0.9	1.3	1.5	2.2	2.6	5800		
GGIL-12	1/2"	27	32	39.5	56.6	70.8	360	80	370
		1.1	1.3	1.6	2.2	2.8	5220		
GGIL-19	3/4"	32	41	49.5	74.8	90.8	310	120	280
		1.3	1.6	1.9	2.9	3.6	4495		
GGIL-25	1"	41	46	54.5	80.8	100.2	280	150	230
		1.6	1.8	2.1	3.2	3.9	4060		
GGIL-32	1 1/4"	50	54.7	59.7	78.5	98.2	250	200	200
		2.0	2.2	2.4	3.1	3.9	3625		
GGIL-40	1 1/2"	55	65	70	85	107	210	250	170
		2.2	2.6	2.8	3.3	4.2	3045		
GGIL-50	2"	70	75	79.5	92	117	180	300	140
		2.8	3.0	3.1	3.6	4.6	2610		

*Note: The maximum rotational speed quoted is for zero pressure and hydraulic oils

PSI= Bar x14.5 Inches= mm/25.4