

GG90 SERIES

90 degree rotary couplers

INTRODUCTION

Holmbury's GG90 Series 90 degree rotary couplers are designed for use on hydraulics lines that may be subject to torsional stress to allow rotation of hydraulic pipes and hoses. Using a rotary coupler in the hydraulic line stops the hose twisting, limiting stress and increasing hose lifespan.

CONSTRUCTION

- Carbon steel with trivalent plating
- Fitted with Nitrile seals
- Also available in AISI 316 stainless steel (See SR90 Series)

FEATURES

- Reduces torsional forces
- Can also be used in applications that are required to rotate but not under pressure, such as hose reels
- Spindle is carried on a roller bearing and has a low friction shaft seal that can rotate at maximum pressure with low torque

SPECIFICATIONS

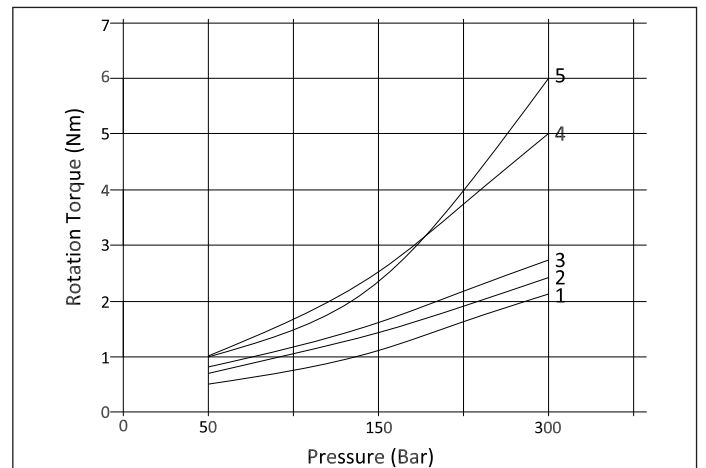
- Operating temperatures (with Nitrile seals): -40°C (-40°F) to 106°C (223°F)

APPLICATIONS

- Designed for usage in general hydraulic systems, machine tools, test equipment, agricultural, and mobile hydraulics



ROTATIONAL TORQUE

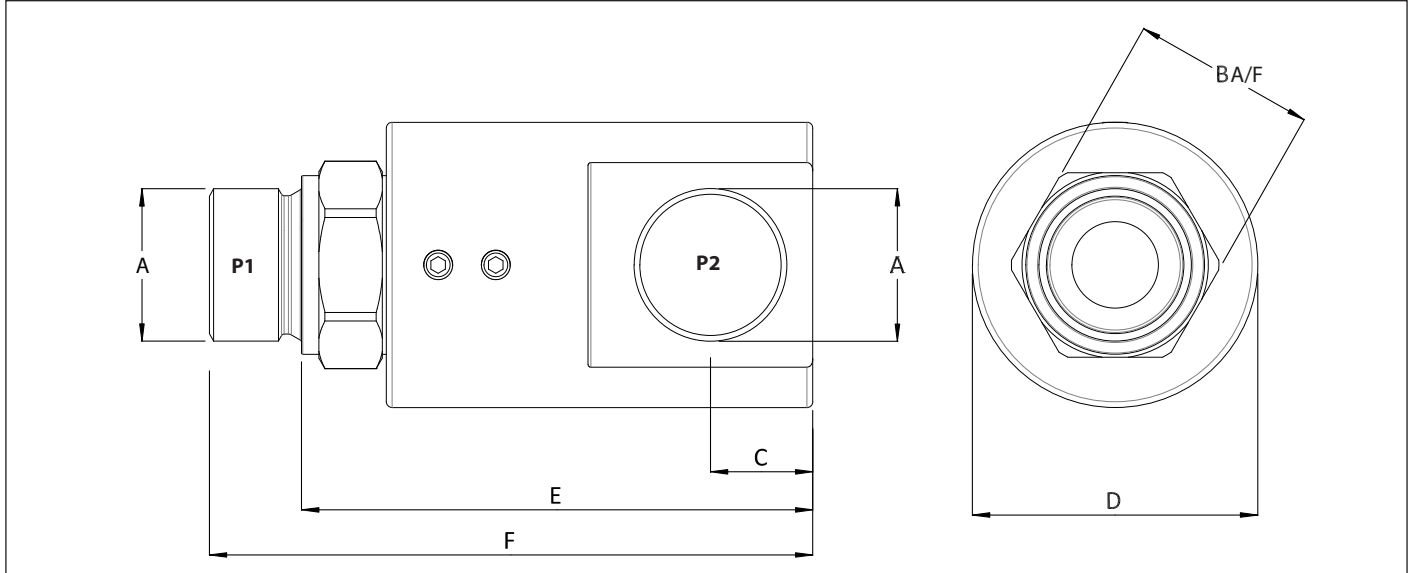


ORDER CODES

GG90 - 19 - 12		G	M - 12	G
Series		Thread Type (Female Only)		
GG90		G = BSPP N = NPT S = SAE		
Body Size		Thread Size (P2)		
06 - 1/4"	25 - 1"	04 - 1/4"	16 - 1"	
10 - 3/8"	32 - 1 1/4"	06 - 3/8"	20 - 1 1/4"	
12 - 1/2"	40 - 1 1/2"	08 - 1/2"	24 - 1 1/2"	
19 - 3/4"	50 - 2"	10 - 5/8"	32 - 2"	
	Thread Size (P1)		Thread Type (Male Only)	
	04 - 1/4"	16 - 1"	G = BSPP	S = SAE
	06 - 3/8"	20 - 1 1/4"	N = NPT	J = JIC
	08 - 1/2"	24 - 1 1/2"		
	10 - 5/8"	32 - 2"		
	12 - 3/4"			



DRAWING



DIMENSIONS

Size	Thread Size (A)*	B	C	ØD	E	F	Maximum Working Pressure	Maximum Flow Rate	Maximum Rotational Speed†
		Dimensions in mm					Bar		
		Dimensions in Inches					Psi	L/Min	RPM
GG90-06	1/4"	19	11.3	33	57.5	71	400	25	500
		0.7	0.4	1.3	2.3	2.8	5800		
GG90-10	3/8"	24	13.5	37.7	65.7	77.5	400	45	400
		0.9	0.5	1.5	2.6	3.1	5800		
GG90-12	1/2"	27	16.3	39.5	77.5	91.4	360	80	370
		1.1	0.6	1.6	3.1	3.6	5220		
GG90-19	3/4"	34	19	55.9	81	100	310	120	280
		1.3	0.7	2.2	3.2	3.9	4495		
GG90-25	1"	41.2	22.8	59.5	101	120	280	150	230
		1.6	0.9	2.3	4.0	4.7	4060		
GG90-32	1 1/4"	50	32	64.5	84.1	120	250	200	200
		2.0	1.3	2.5	3.3	4.7	3625		
GG90-40	1 1/2"	55	39	76	114.5	137.5	210	250	170
		2.2	1.5	3.0	4.5	5.4	3045		
GG90-50	2"	70	43.5	86	123.4	149	180	300	140
		2.8	1.7	3.4	4.9	5.9	2610		

*Dimensions based on BSPP threads

PSI= Bar x14.5 Inches= mm/25.4

† Note: The maximum rotational speed quoted is for zero pressure and hydraulic oils