

# HCP SERIES

## Connect under pressure flat face male couplers made to the ISO 16028 Standard dimensions

### INTRODUCTION

Holmbury's HCP Series male couplers are designed to connect under pressure by hand with up to 350 bar locked in the male half, making it an ideal choice for applications where the ability to connect under pressure is essential. The HCP Series also benefits from all the key features of the HQ Series flat face couplers.

### CONSTRUCTION

- Carbon steel with zinc nickel plating (1200 hours with no red rust in salt spray tests)
- Fitted with Nitrile seals

### FEATURES

- Designed to connect with the HQ Series female half
- Flat faces are easily wiped clean
- Allows for minimal inclusion of air and contaminants during connection
- Flat face design prevents fluid loss during disconnection
- Bidirectional flow
- Connect under pressure with up to 350 bar locked in the male half
- Female half must have zero pressure when connecting male half under pressure

### ACCESSORIES

- Dust Caps are available for the HCP Series



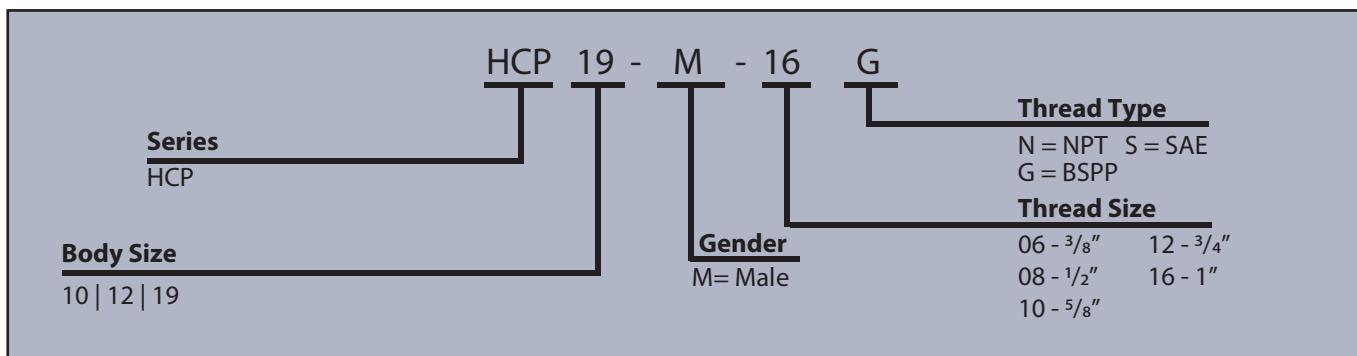
### SPECIFICATIONS

- Operating temperatures (With Nitrile seals): -40°C (-40°F) to 106°C (223°F)

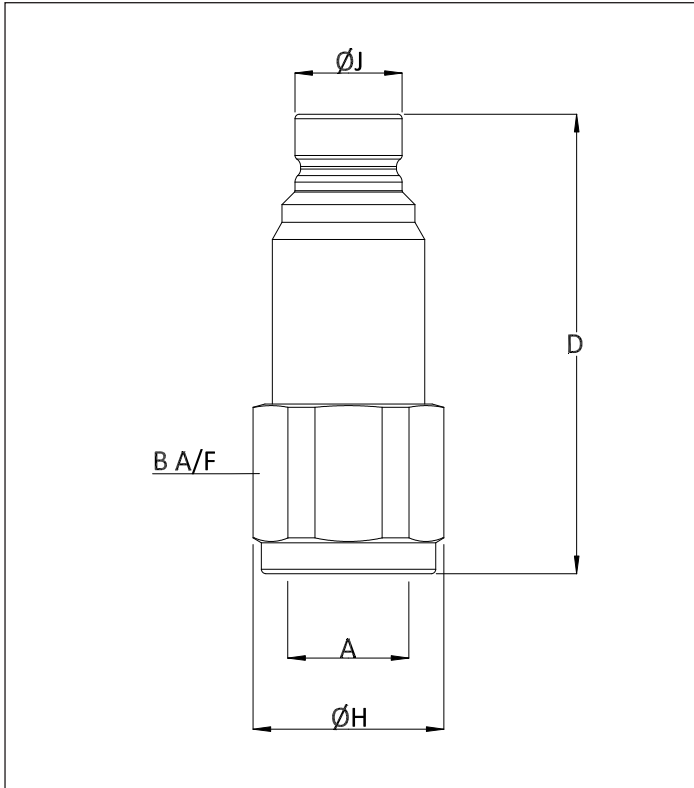
### APPLICATIONS

- Hot environments where thermal expansion of trapped oil may take place
- Hammer circuits
- High pressure pulse applications
- Leak free environments
- Construction plant, mobile equipment, general industrial, nuclear, mining and agricultural industries

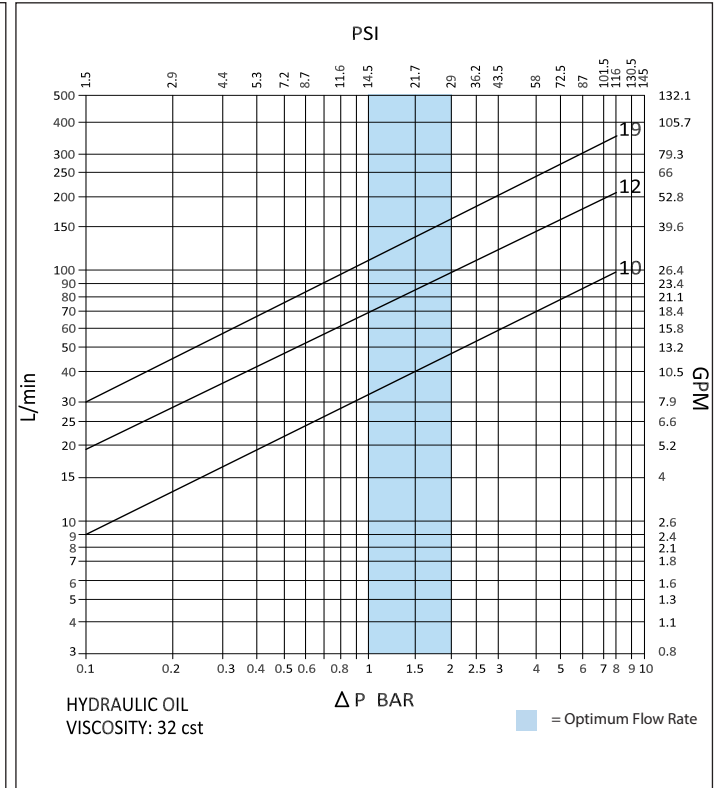
### ORDER CODES



## DRAWING



## PRESSURE DROP CHARACTERISTICS



FLAT FACE COUPLERS

## DIMENSIONS

Size	Thread Size (A)*	B	D	ØH	ØJ	Maximum Working Pressure	Burst Pressure (Coupled)	Burst Pressure (Male)
		Dimensions in mm				Bar		
		Dimensions in Inches				Psi		
HCP 10	3/8" & 1/2"	30.0	87.0	32.0	16.2	350	1500	1500
		1.2	3.4	1.3	0.6	5075	21750	21750
HCP 12	1/2" & 3/4"	41.0	104.0	44.0	19.7	350	1200	1500
		1.6	4.1	1.7	0.8	5075	17400	21750
HCP 19	1"	46.0	114.5	50.0	24.5	350	1450	1600
		1.8	4.5	2.0	1.0	5075	21025	23200

\*Dimensions based on BSPP threads

PSI= Bar x14.5 Inches= mm/25.4

