

# P SERIES

## ISO A push / pull female couplers (Connects with 1/2" ISO A male probes)

### INTRODUCTION

Holmbury's P Series ISO A female couplers are designed primarily for the agricultural industries and incorporate a push-pull design. The coupler is panel mounted using circlip grooves in the locking sleeve.

### CONSTRUCTION

- Carbon steel with trivalent plating
- Fitted with Nitrile seals
- Also available in connect under pressure variant (See IAPC Series)

### FEATURES

- Can be connected with standard ISO A 1/2" male couplers
- Available with ball seal mechanism in body size 12 only
- Release mechanism protects coupler and hose from damage in event of accidental separating force
- Locking ball system allows quick connection
- Bidirectional flow

### ACCESSORIES

- Dust Caps and Plugs are available for the P Series



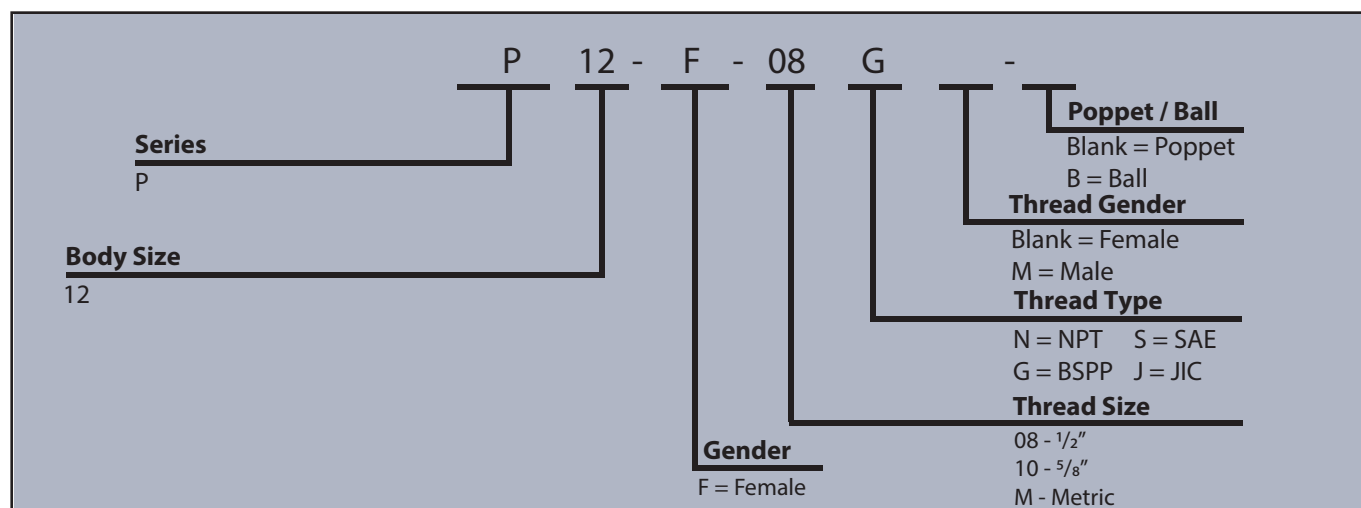
### SPECIFICATIONS

- Operating temperatures (with Nitrile seals): -40°C (-40°F) to 106°C (223°F)

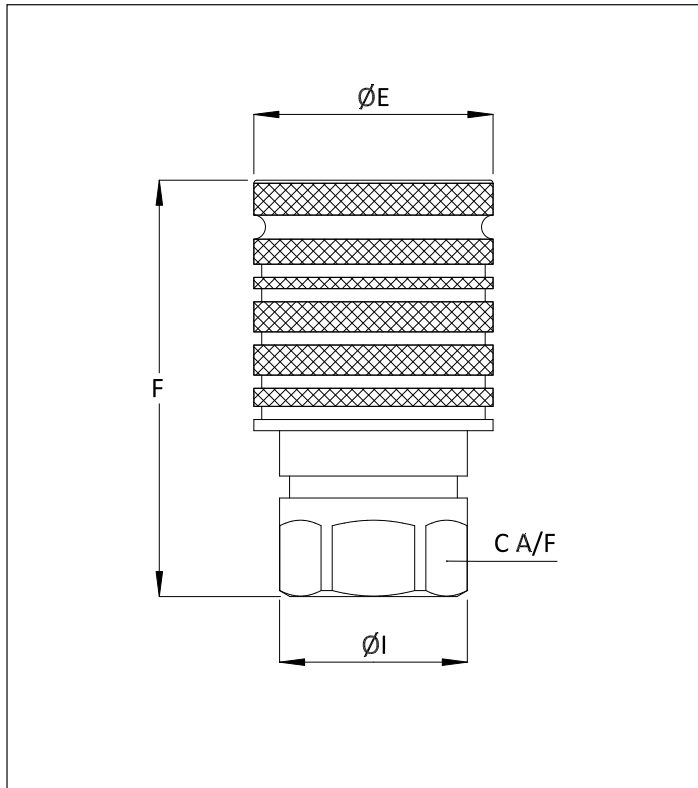
### APPLICATIONS

- Agricultural
- Mobile
- Construction

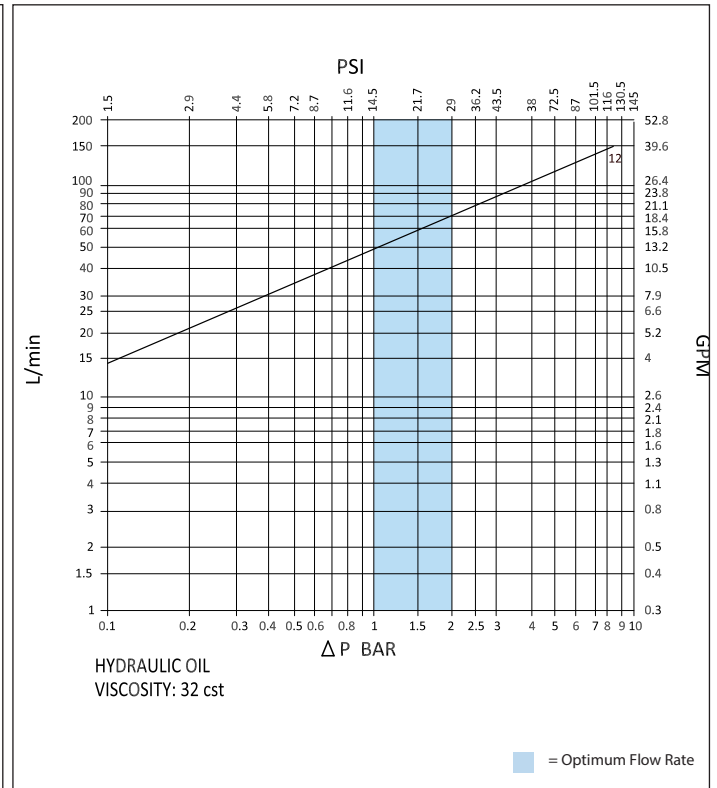
### ORDER CODES



## DRAWING



## PRESSURE DROP CHARACTERISTICS



ISO & DIN COUPLERS

## DIMENSIONS

Size	Thread Size (A)	C	F	ØE	ØI	Maximum Working Pressure	Burst Pressure (Coupled)	Burst Pressure (Male)	Burst Pressure (Female)
		Dimensions in mm				Bar			
		Dimensions in Inches				Psi			
P 12	1/2"	27.0	66.5	38.5	30.0	320	1500	1500	1400
		1.1	2.6	1.5	1.2	4640	21750	21750	20300
P 12 - B	1/2"	27.0	66.5	38.5	30.0	275	1250	1200	1200
		1.1	2.6	1.5	1.2	3987.5	18125	17400	17400

\*Dimensions based on BSPP threads

PSI= Bar x14.5 Inches= mm/25.4

